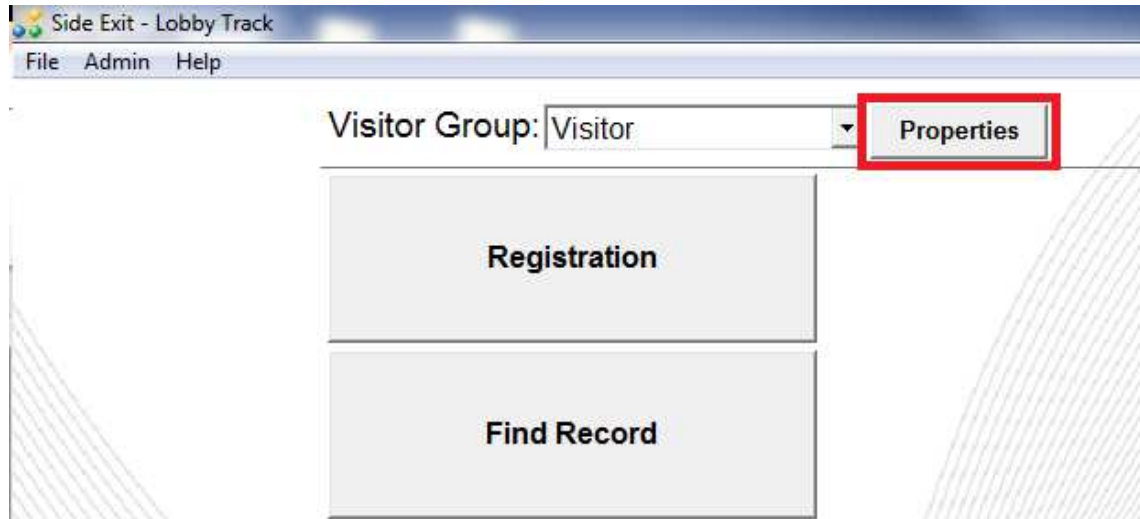
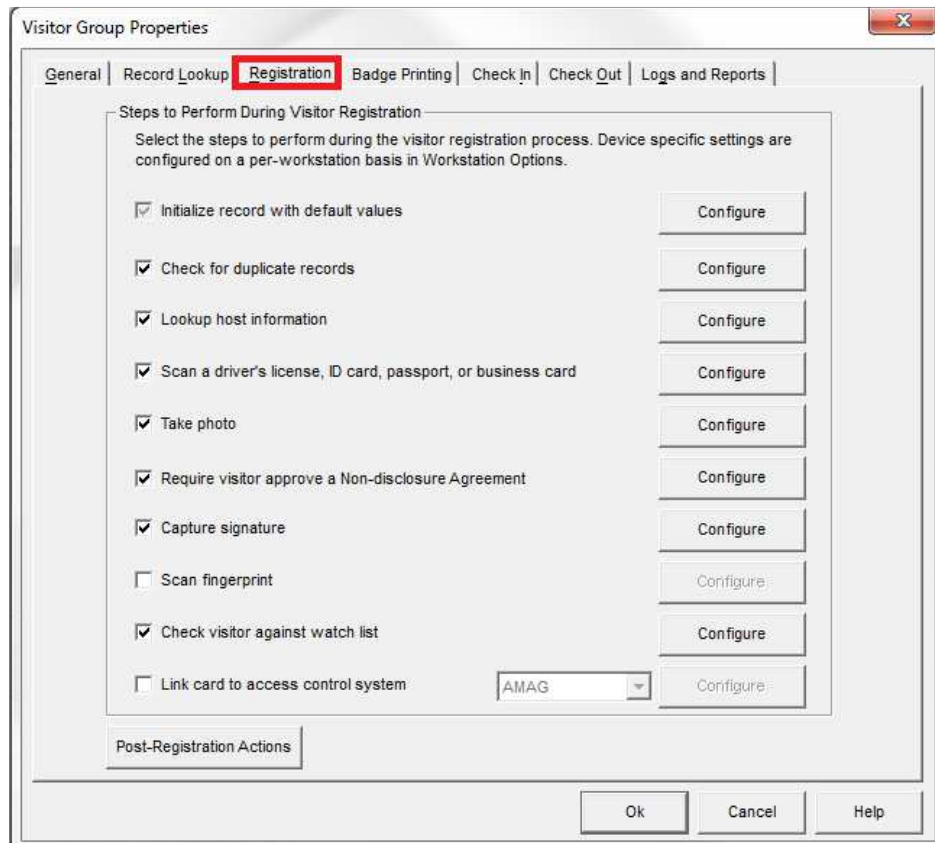


SHI C-CURE 9000 Access Control System Setup

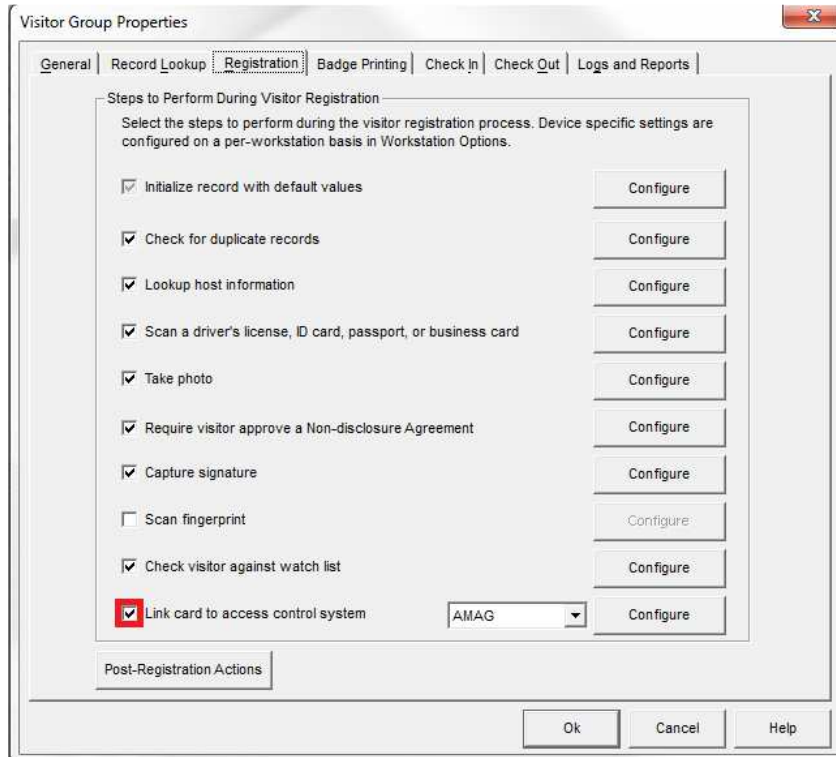
1. Open the group properties.



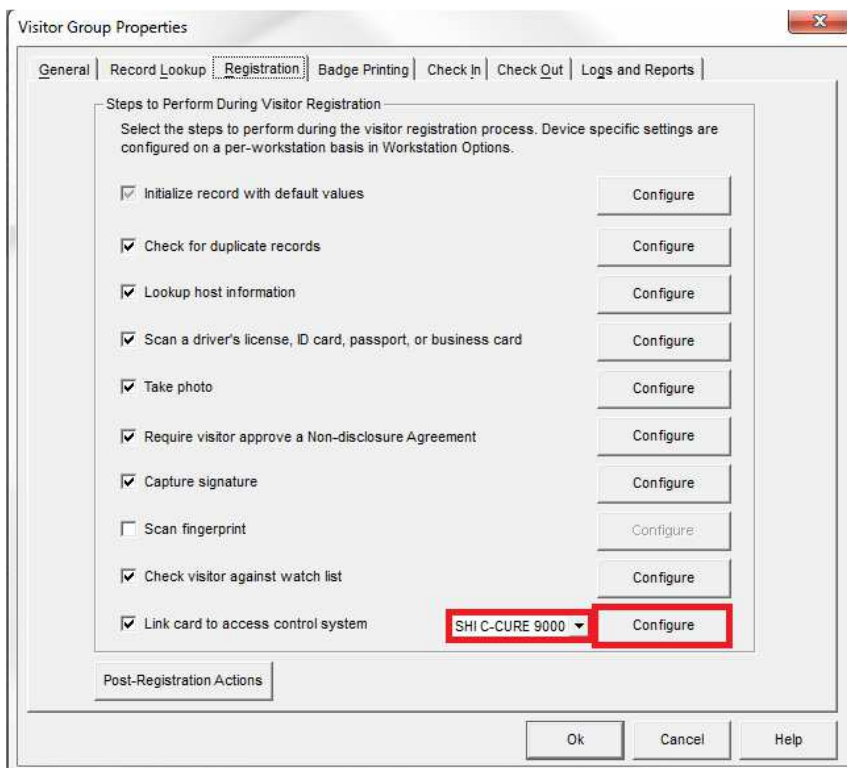
2. Open the Registration tab.



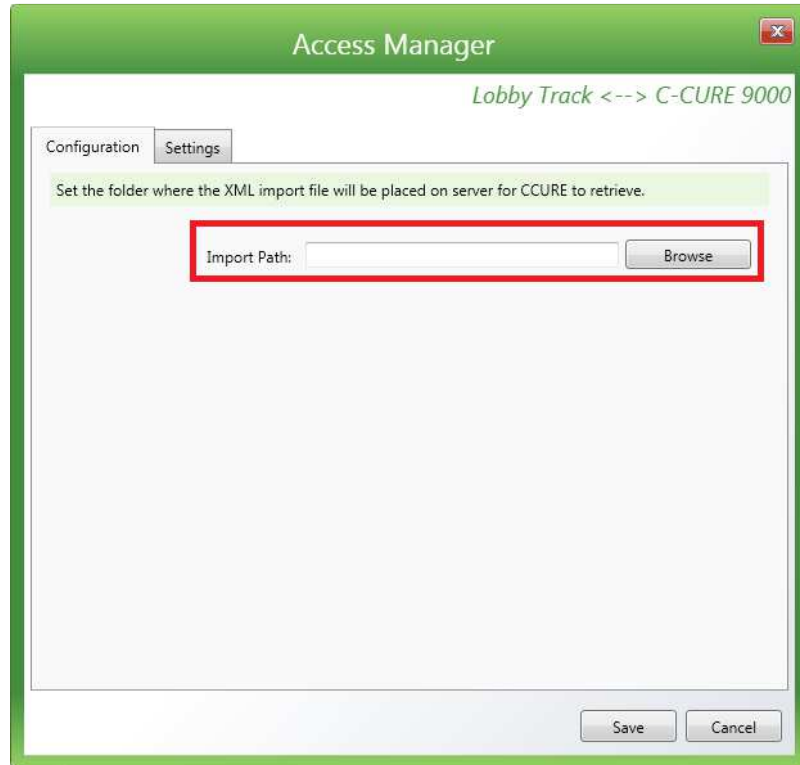
3. Select the 'Link card to access control system' option.



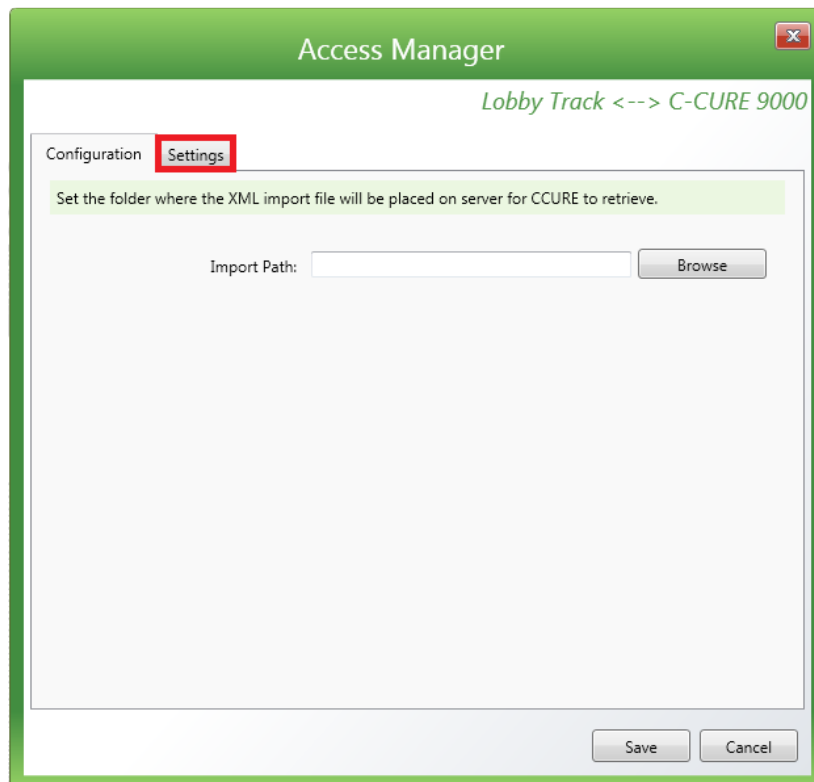
4. Select SHI C-CURE 9000 from the drop-down menu and click configure.



5. Configure the software by referencing the settings retrieved from your SHI C-CURE 9000 system.



6. Open the Settings tab.



7. Map the database fields between the Jolly Technologies software and the SHI C-CURE 9000 system.

The screenshot shows the 'Access Manager' window with the 'Settings' tab selected. The title bar reads 'Lobby Track <--> C-CURE 9000'. Below the tabs, a green box contains the instruction: 'Map the CCURE fields to Lobby Track record fields. When a record is saved in Lobby Track, the mapped values will be sent to the CCURE system.' The main area contains two columns of fields: 'CCURE Fields' and 'Lobby Track Fields'. A red rectangle highlights the mapping area. The 'Clearance Key' field is empty.

CCURE Fields	Lobby Track Fields
(PersonnelID) Int6:	<input type="text"/>
Personnel Type:	<input type="text"/>
First Name:	<input type="text"/>
Middle Name:	<input type="text"/>
Last Name:	<input type="text"/>
PIN:	<input type="text"/>
Card Number:	<input type="text"/>
Activation Date Time:	<input type="text"/>
Expiration Date Time:	<input type="text"/>
Clearance Key:	<input type="text"/>

Buttons: Save, Cancel

8. Click the Save button.

This screenshot is identical to the previous one, but the 'Save' button at the bottom right is highlighted with a red rectangle.

Buttons: Save, Cancel

9. Click the Ok button.

