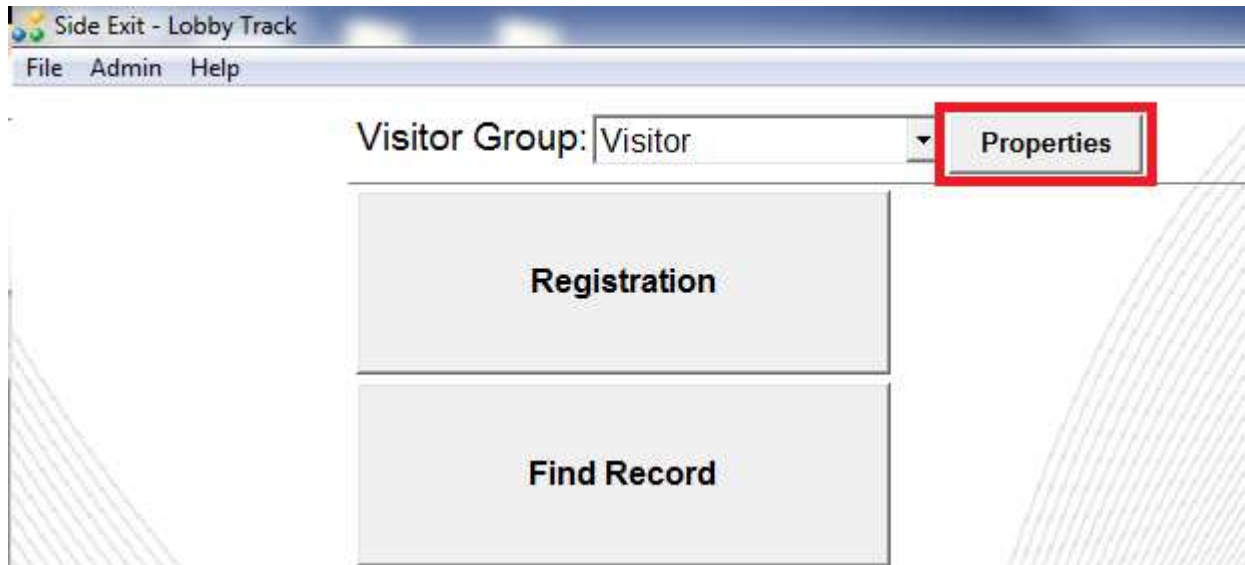
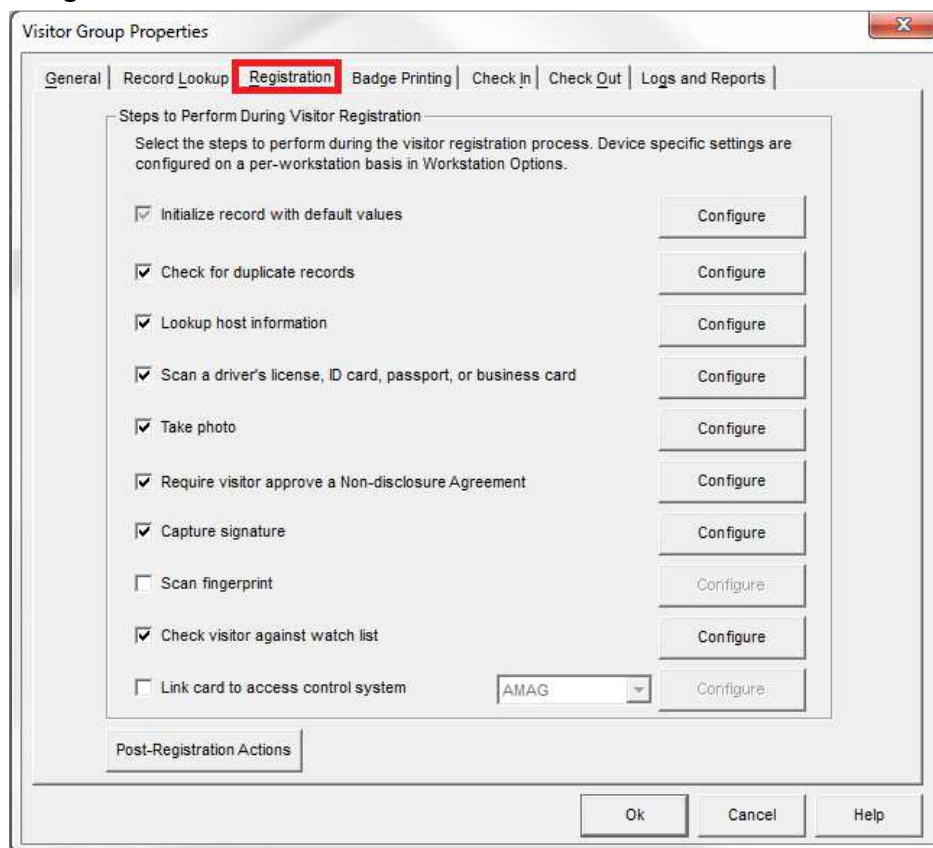


Lenel Access Control System Setup

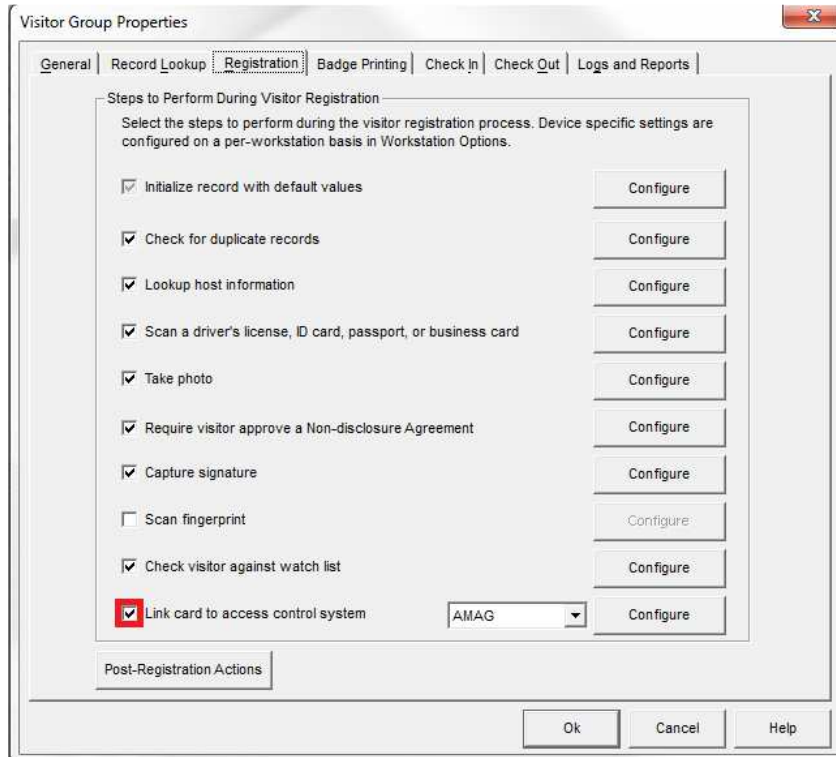
1. Open the group properties.



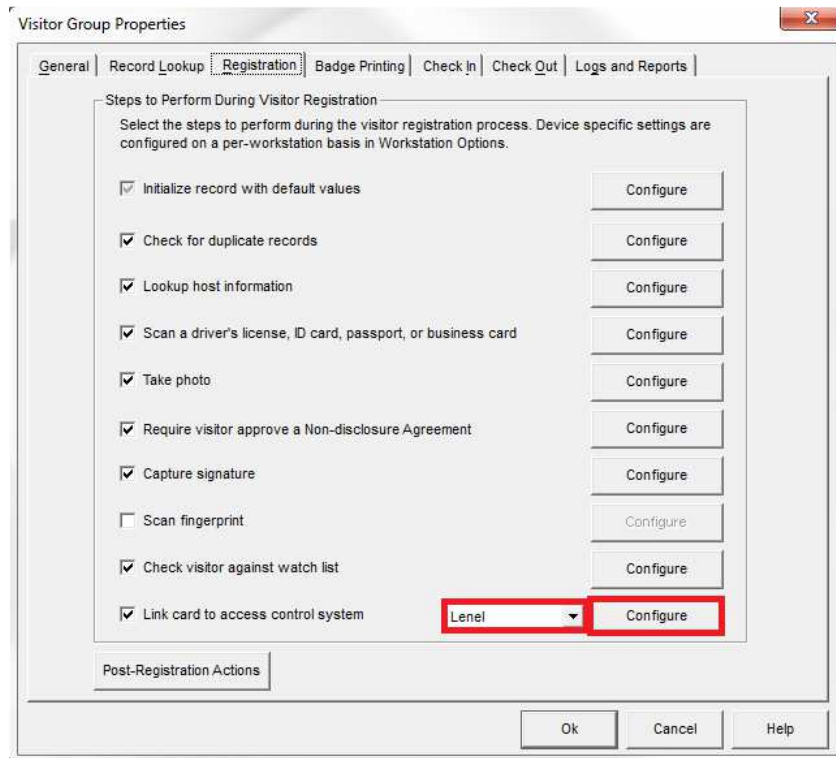
2. Open the Registration tab.



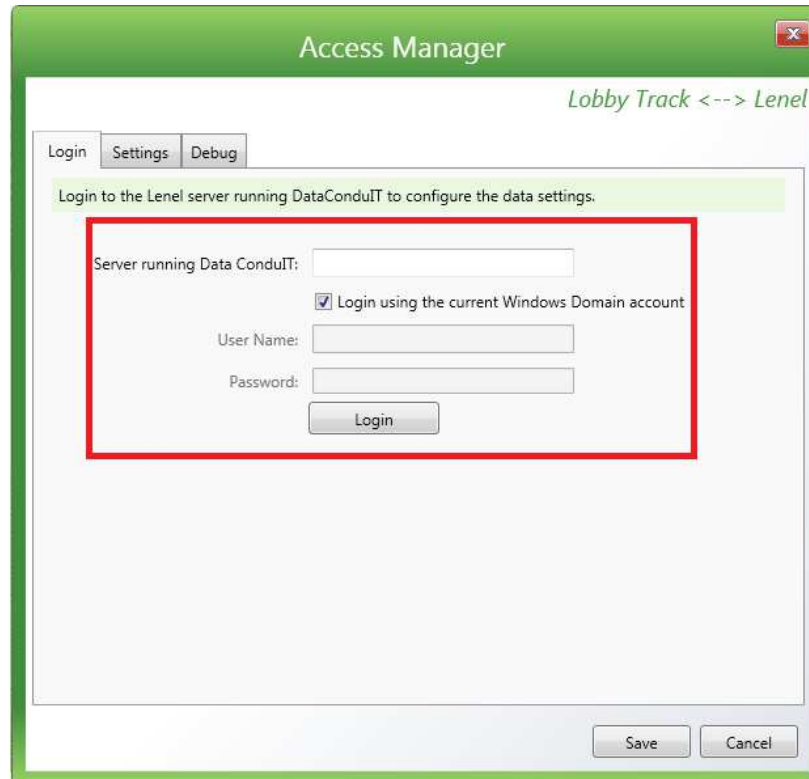
3. Select the 'Link card to access control system' option.



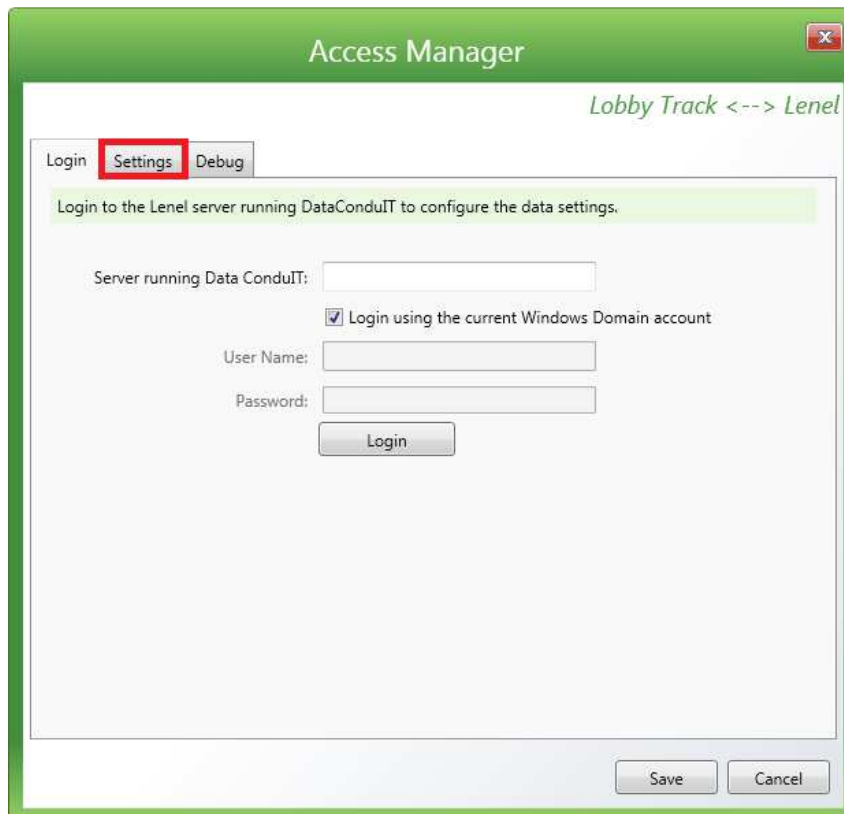
4. Select Lenel from the drop-down menu and click configure.



5. Configure the software by referencing the settings retrieved from your Lenel system.



6. Open the Settings tab.



7. Map the database fields between the Jolly Technologies software and the Lenel system.

The screenshot shows the 'Access Manager' window with the 'Lobby Track <--> Lenel' configuration page. The 'Settings' tab is active. A green box contains the instruction: 'Select the Lenel Badge Type and Access Level that cardholders will be assigned and map the Lenel group fields to Lobby Track record fields. When a record is saved in Lobby Track, the mapped values will be sent to the Lenel server.' Below this, there are two columns of dropdown menus. The first column is labeled 'Lenel Fields' and the second is 'Lobby Track Visitor Fields'. A red rectangular box highlights the entire mapping area, including the 'Lenel Badge Type' and 'Lenel Access Level' dropdowns, and the corresponding 'Lobby Track Visitor Fields' dropdowns for 'Lenel Record ID', 'Card Number', 'First Name', 'Middle Name', 'Last Name', 'Cardholder ID', 'Start Date', 'End Date', and 'PIN'. At the bottom right, there are 'Save' and 'Cancel' buttons.

8. Click the Save button.

This screenshot is identical to the previous one, showing the 'Access Manager' window with the 'Lobby Track <--> Lenel' configuration page. The 'Settings' tab is active. The instruction box and the mapping area are the same. However, in this screenshot, the 'Save' button at the bottom right is highlighted with a red rectangular box, indicating the next step in the process.

9. Click the Ok button.

